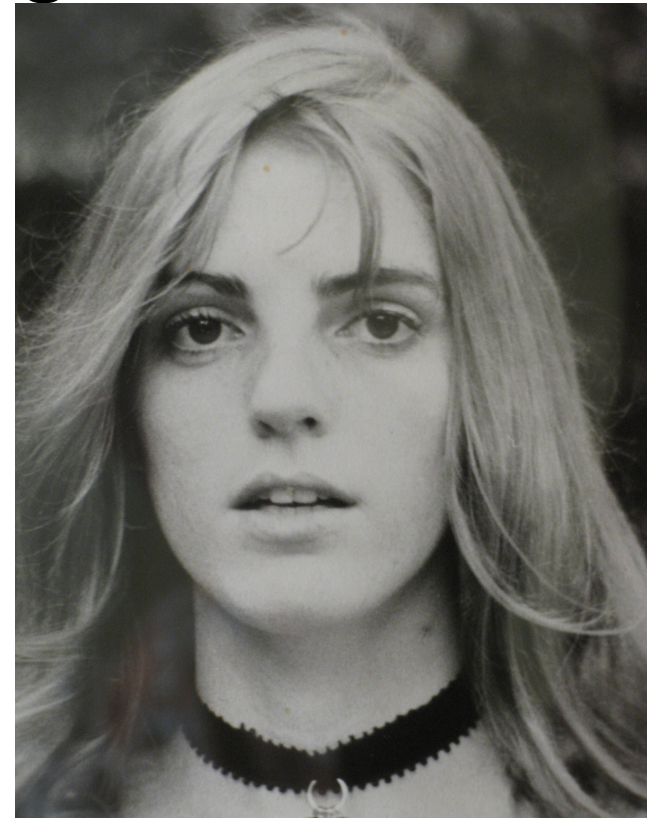
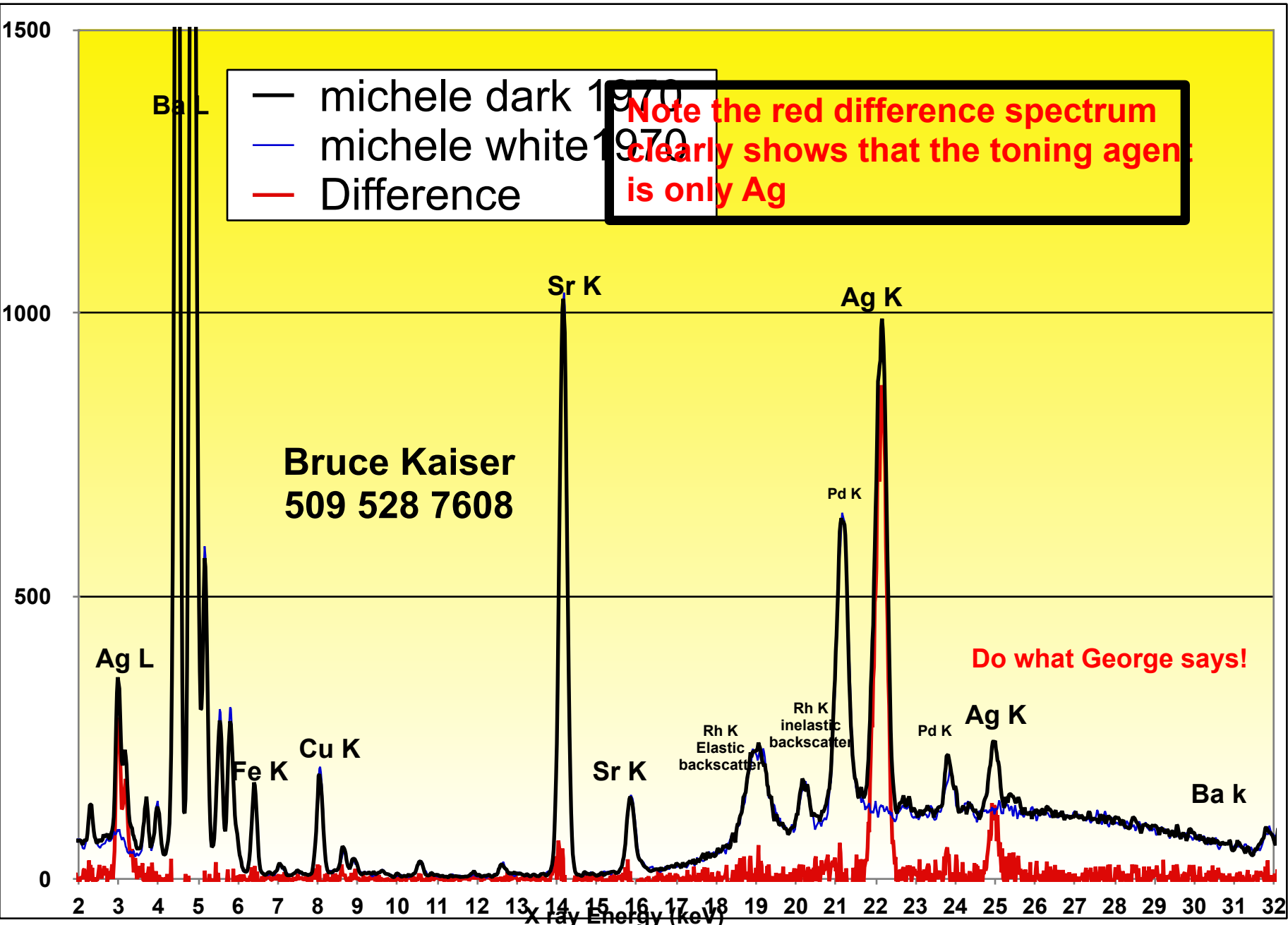


Measurement of Toning Agents on Photographs

- Use .006" Cu, .001 Ti, .012" Al filter
 - Analyze at photograph
 - 40kV
 - 6 micro amps(what is available)
 - No vacuum
 - 5 to 10 min in
 - White area where there is no toner
 - Areas tone varies grey to black
 - Take the difference (toned – white)
-
- The difference will give you a very good clean spectrum of the toning agent. And the grey to black variation will give you an estimate of the amount of agent. The reason this works so well are
 - The toning materials are very thin and have very little effect on the spectrum from the paper
 - The white area is just the paper and mounting materials
 - The filter used removes most of the backscattered x rays





— michele dark 1970
 — michele white 1970
 — Difference

Note the red difference spectrum clearly shows that the toning agent is only Ag

Bruce Kaiser
 509 528 7608

Do what George says!

X ray Energy (keV)